

Example delta "K">5:

Ks: 38.00/51.00

Average 'K'

$$38.00+51.00=89.00$$

$$89.00/2=44.50$$

$$44.50-2.00=42.50$$

$$\underline{42.50=7.94mm}$$

*Choose Trial Lens
closest to 7.94 mm.
(8.00mm)*

Example delta "K"<5:

Average 'K'

$$42.00+46.00=88.00$$

$$88.00/2=44.00$$

$$44.00-1=43.00$$

$$\underline{43.00=7.84mm}$$

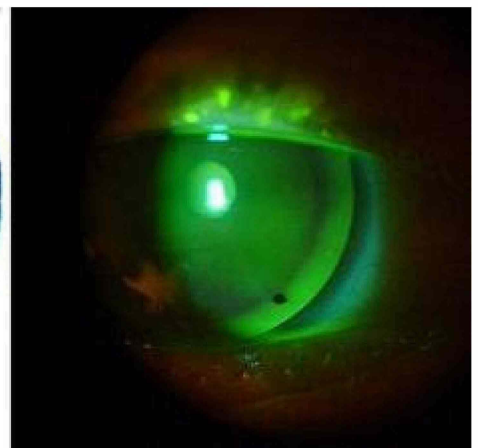
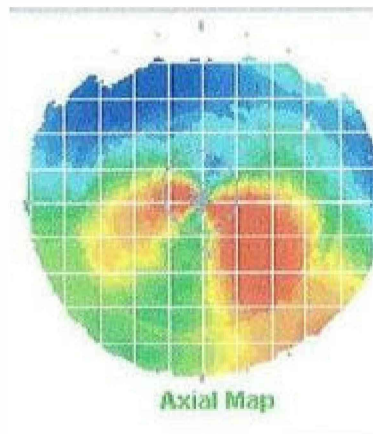
*Choose Trial Lens
Closest to 7.84mm
(7.80mm)*

*Check the Fluorescein
Pattern of the Trial Lens
and it's movement*

*Perform over-refraction
on Trial Lens*

*Order Custom TruPMD
From Tru-Form Optics Inc.
Bedford
1-800-792-1095
San Antonio
1-800-888-5367
Albuquerque
1-800-365-6749*

- Take Keratometry readings or sim k's on the patient to determine the average 'K'. If the delta "K" is great than 5 diopters subtract 2 diopters from the average "K", if the delta "K" is less than 5 diopters subtract 1 diopter from the average "K", convert to millimeters. Choose the closest trial lens.
- Instill fluorescein on the patient to determine the fit of the trial lens. Allow normal settling time before evaluation.
- A good base curve to cornea relationship will exhibit a mostly aligned pattern. If bubbles are present try a flatter lens, if bearing is noted over the ectasia try a steeper lens. An indicator mark is located at the steepest portion of the lens, note the location and stability. The superior half of the base curve may be changed independently form the inferior half.
- Take note of the edgelif. Does it provide for good tear flow and lens movement? The superior and inferior edgelif may be changed independently.
- After determining the proper base-curve for the patient, refract over the lens. Perform vertex conversion for any over refraction greater than +/- 4 diopters. The tear lens may create a large shift in refractive error. *Without an over refraction any lens ordered will almost certainly be too far off to be dispensed.*



*Custom Parameters Available

The TruFormance™ Guarantee

The TruFormance Guarantee is TruForm's performance promise to you, the practitioner, to deliver the highest quality RGP contact lenses in the market with **unlimited remakes***, **24-hour turn-around**, and **100% satisfaction**. *Unlimited remakes are included on all lenses except single vision lenses.

The TruFormance Guarantee is TruForm's performance promise to you, the practitioner, to deliver the highest quality RGP contact lenses in the market with unlimited remakes, 24-hour turn-around, and 100% satisfaction. *Unlimited remakes are included on all lenses except single vision lenses.*